

12 ANEXOS

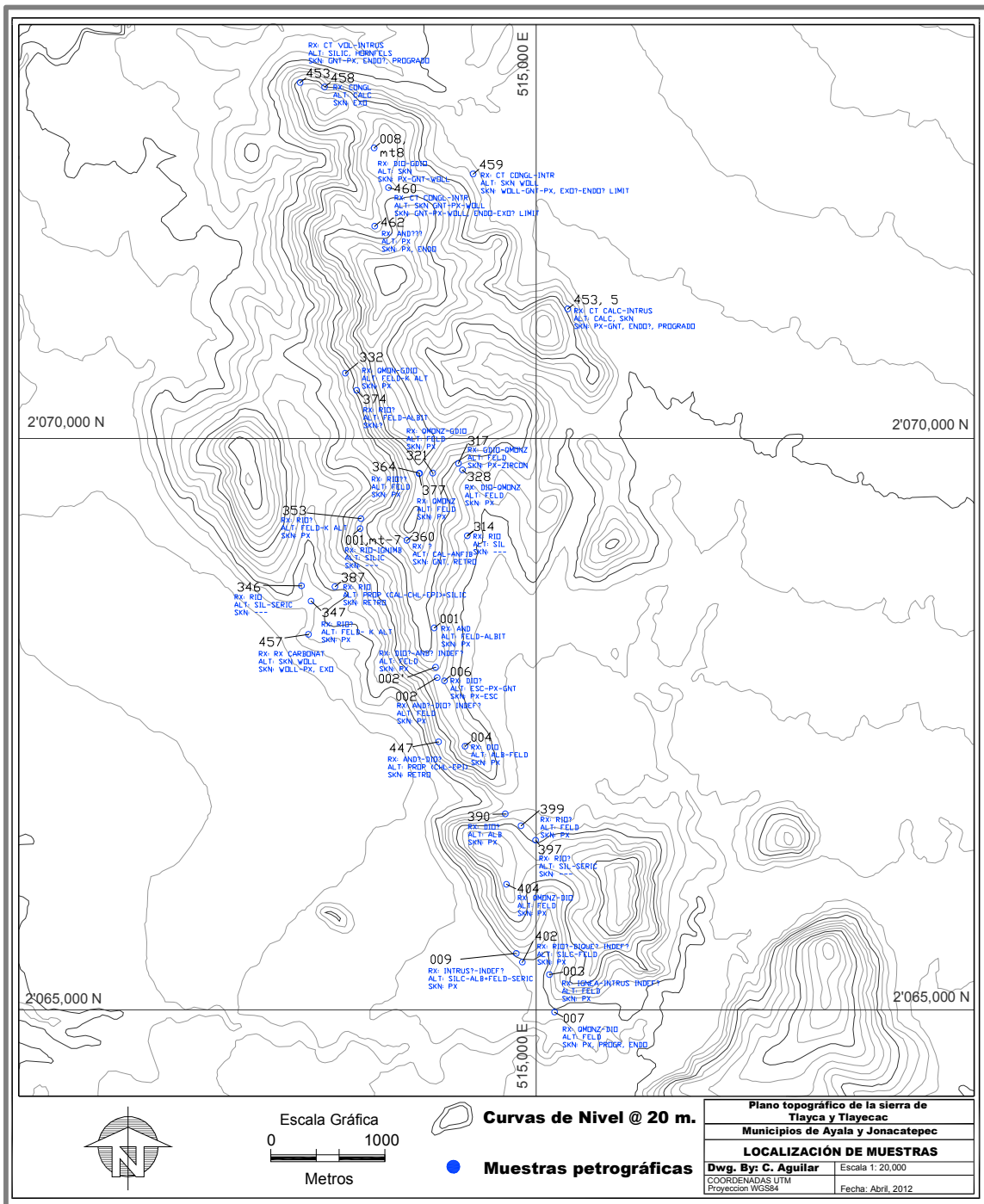


Figura 15. Plano topográfico del área de estudio en el cual se muestra la ubicación de las muestras petrográficas del área de estudio.

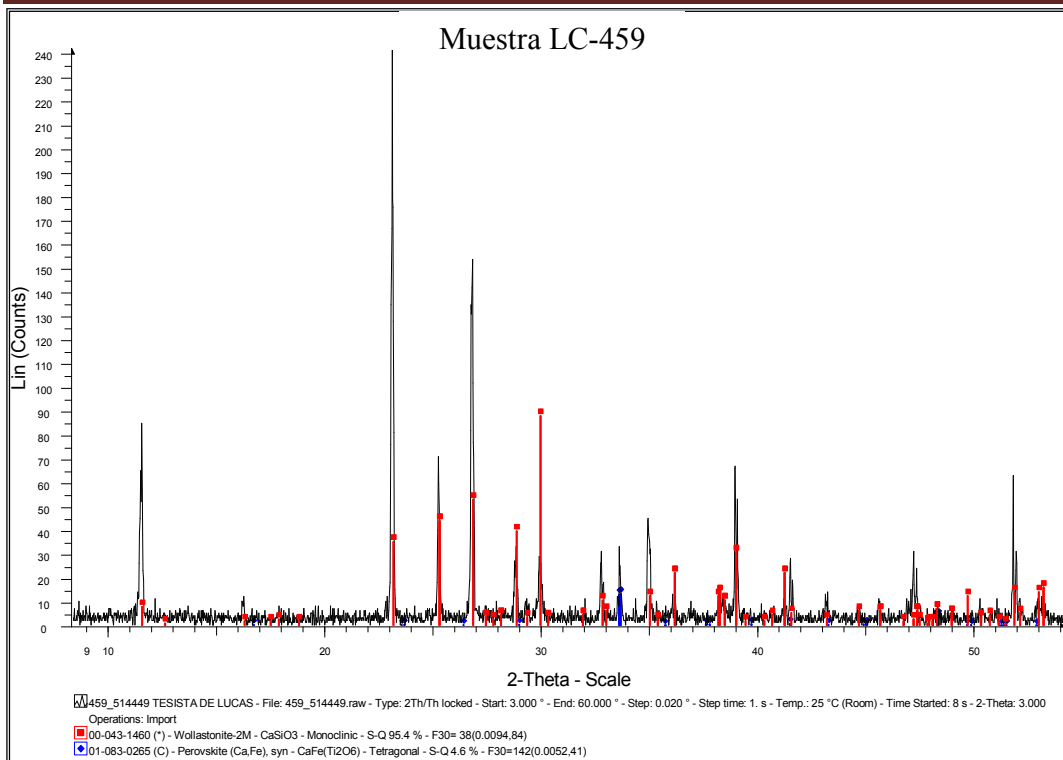
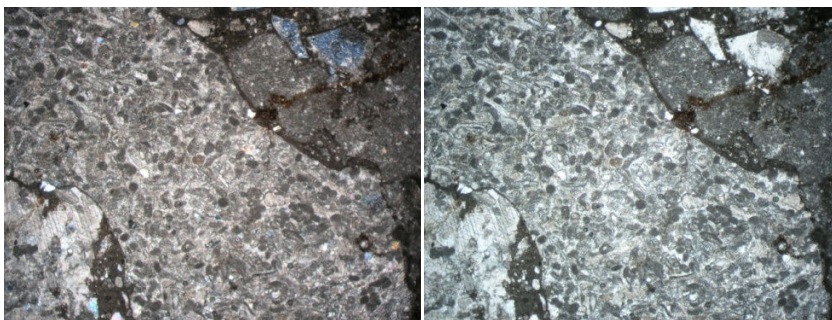


Gráfico 3. Resultado del estudio de difracción de Rayos-X realizado a la muestra LC-459, el cual confirma la presencia de wollastonita, zona de wollastonita-granate.

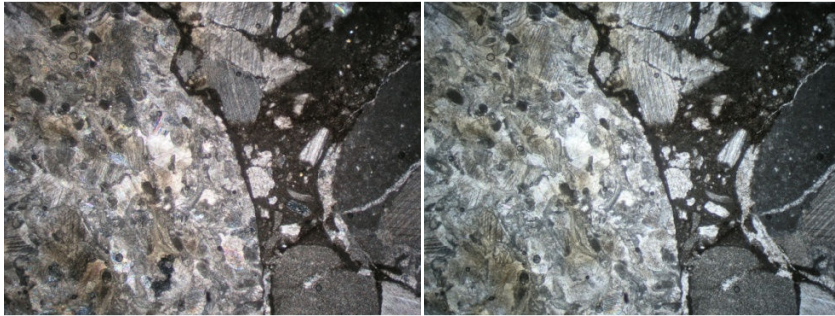
## Secciones Delgadas

### Fotografías

#### Conglomerado Calcáreo (*Fm. Balsas*)

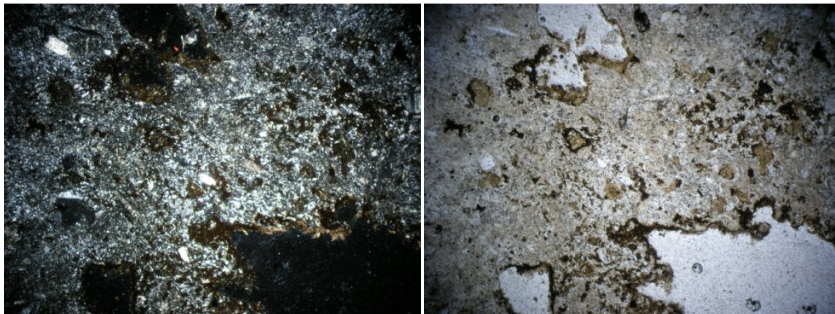


LC-D

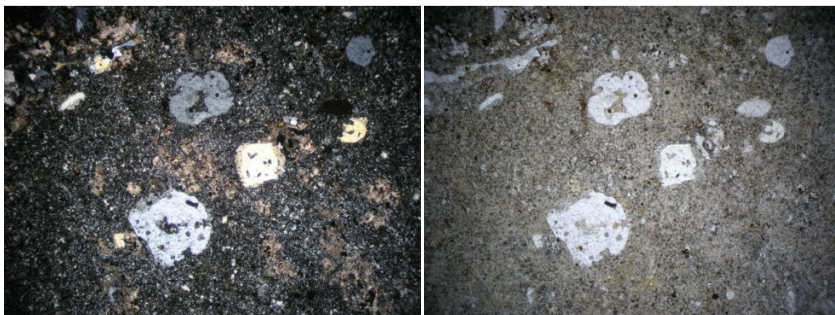


LC-D.1

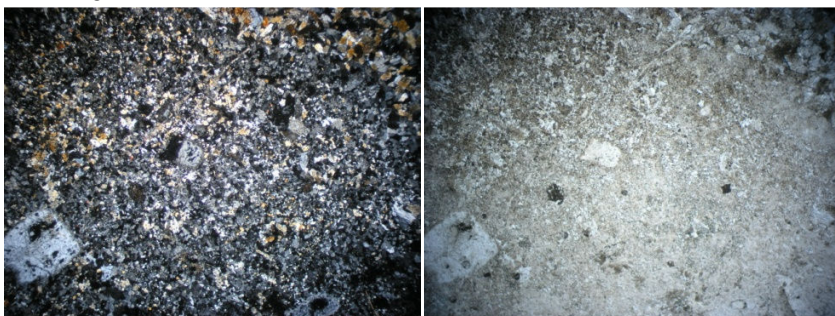
**Rocas Volcánicas (Fm. Tlayca, Riolitas e Ignimbritas)**



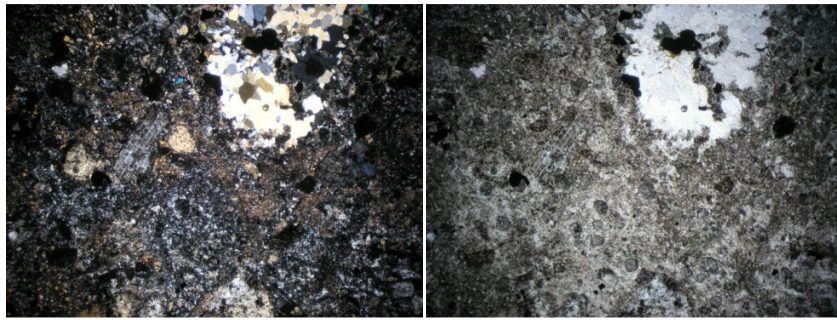
LC-01



LC-M-04



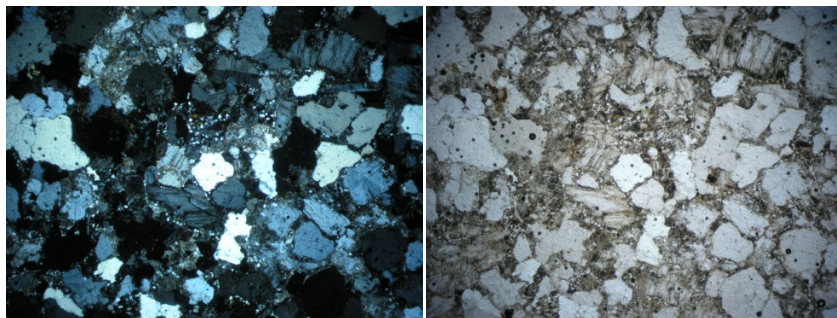
LC-10



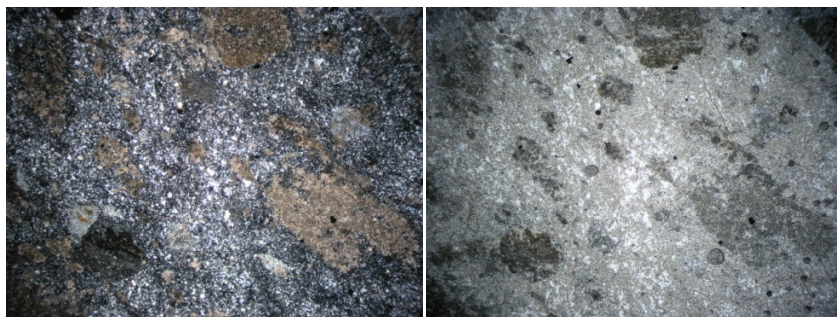
LC-347



LC-364



LC-374



LC-387

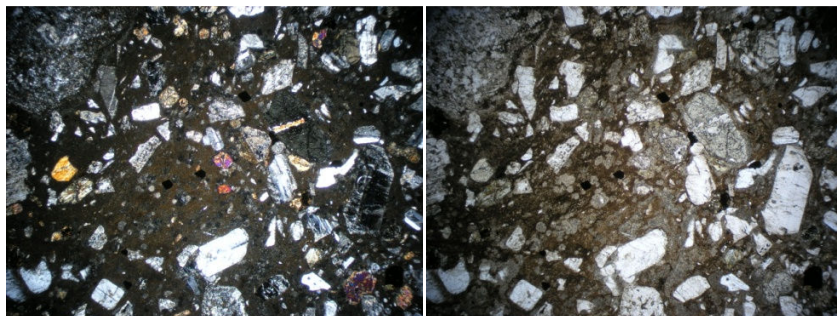


LC-402

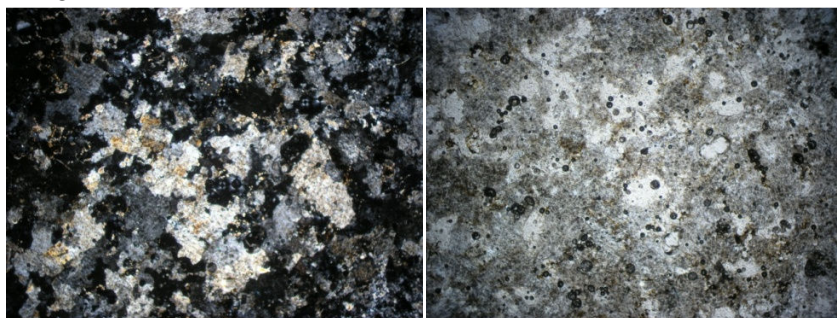
Rocas intrusivas (*Fm. Jalostoc*, Dioritas-Granodioritas)



LC-2



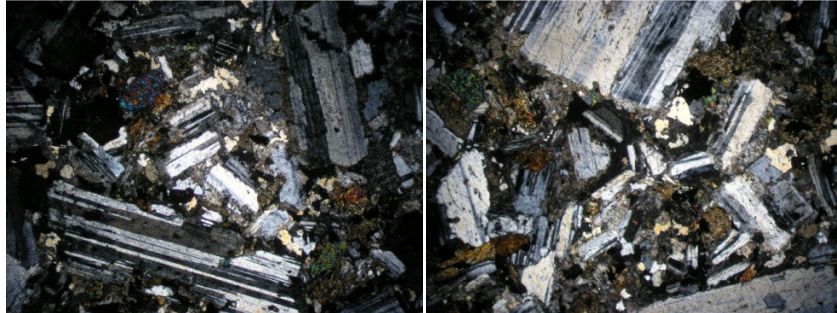
LC-3



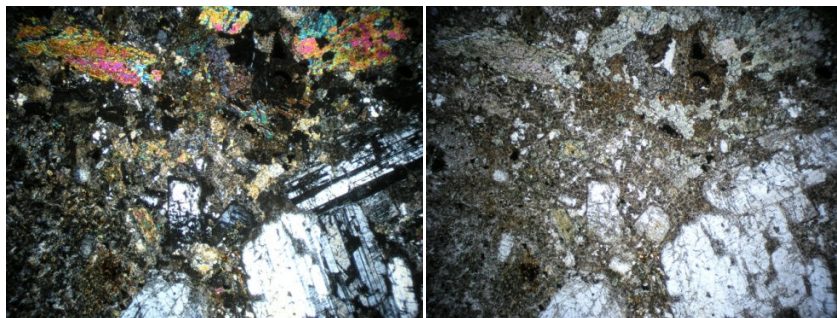
LC-3.1



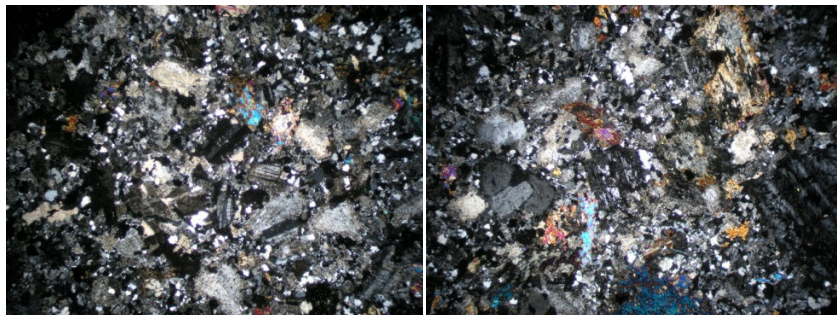
LC-4



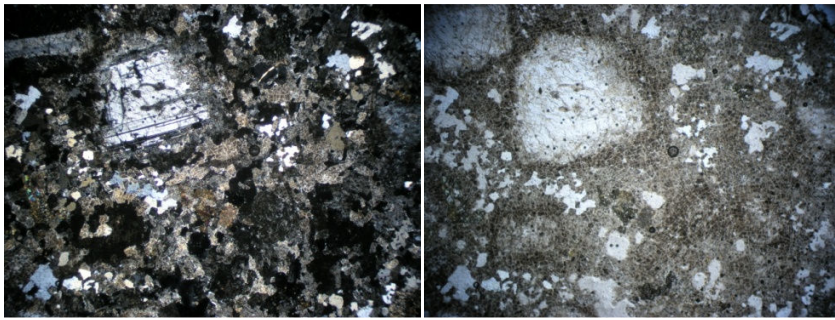
LC-5



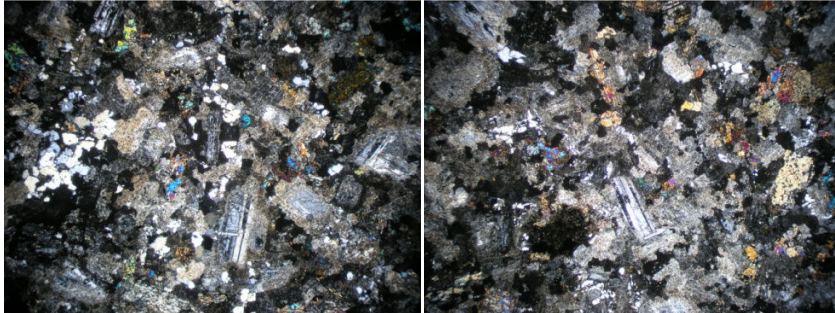
LC-7



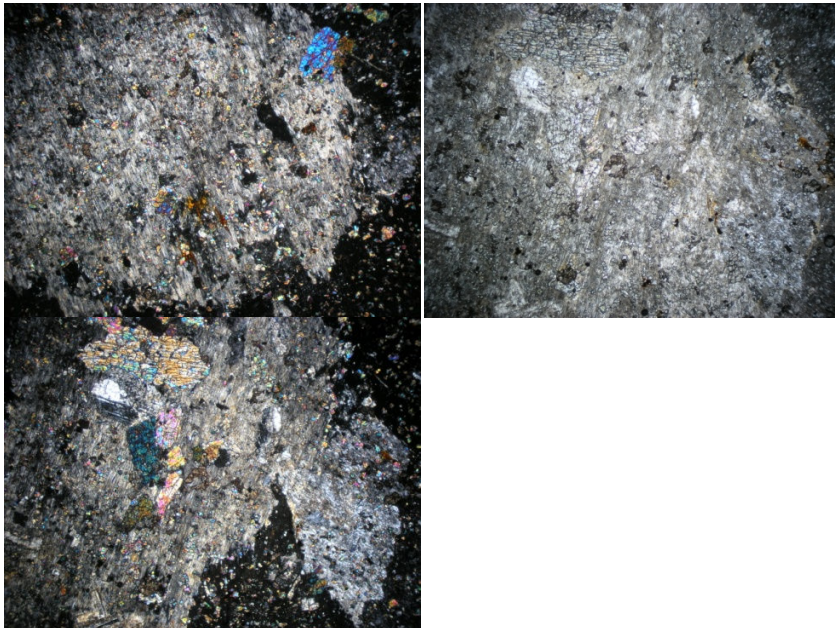
LC-332



LC-377

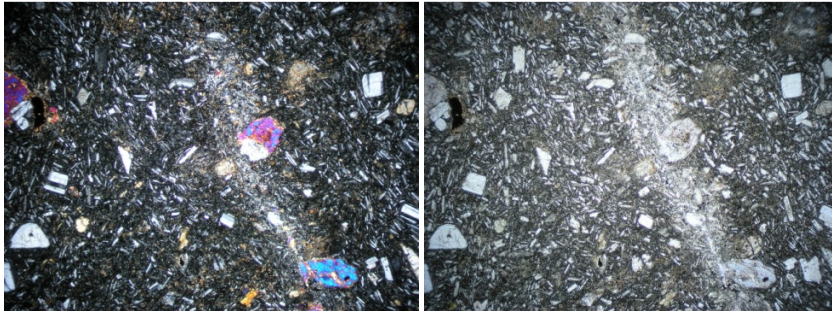


LC-404

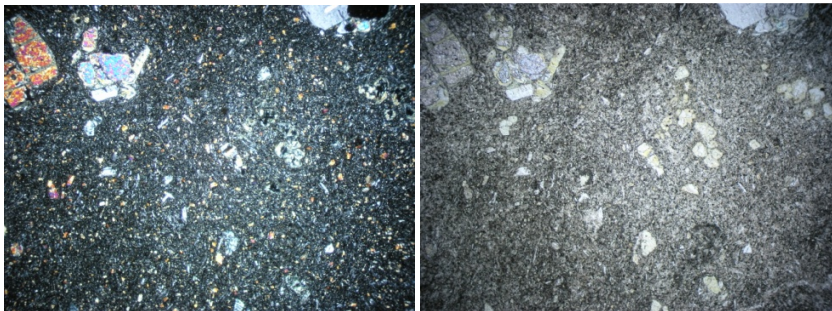


LC-M6

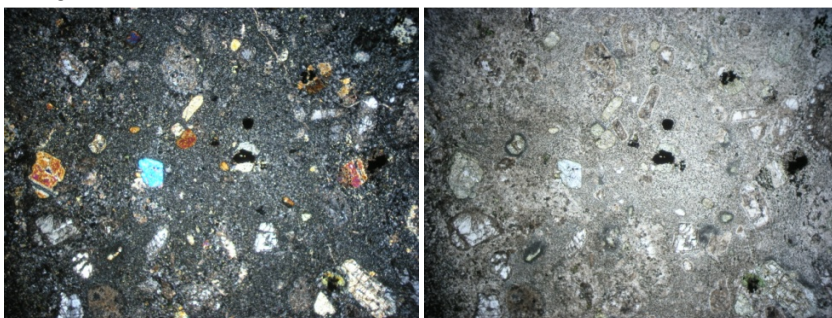
Rocas Andesíticas



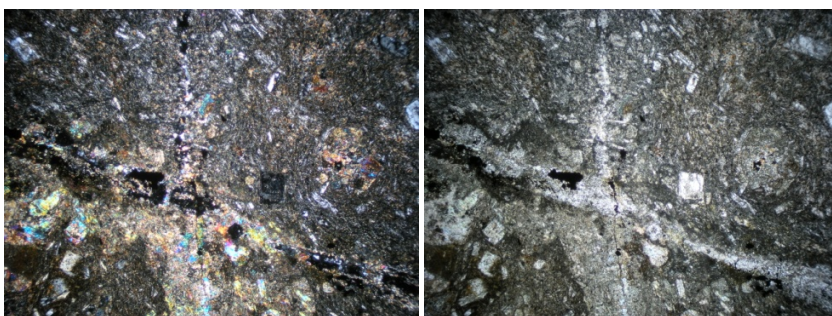
LC-1



LC-6



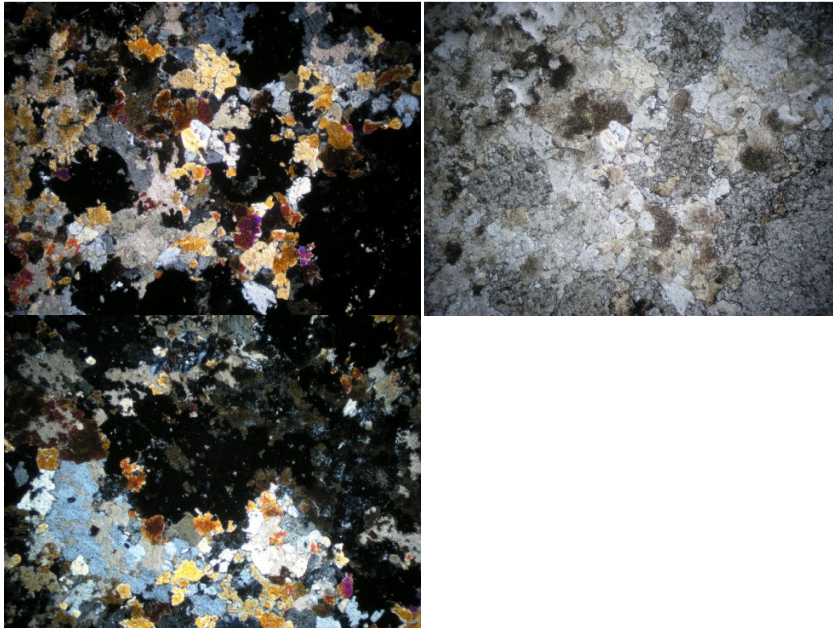
LC-7



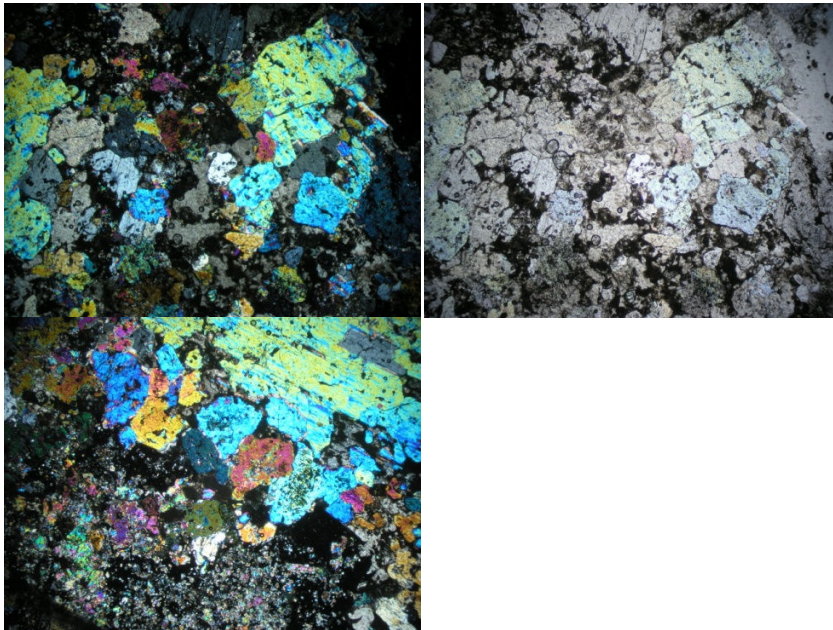
LC-2.1



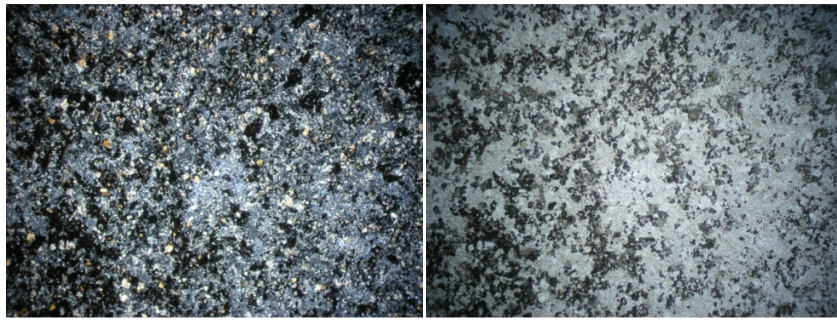
Zona de Skarn de Granate



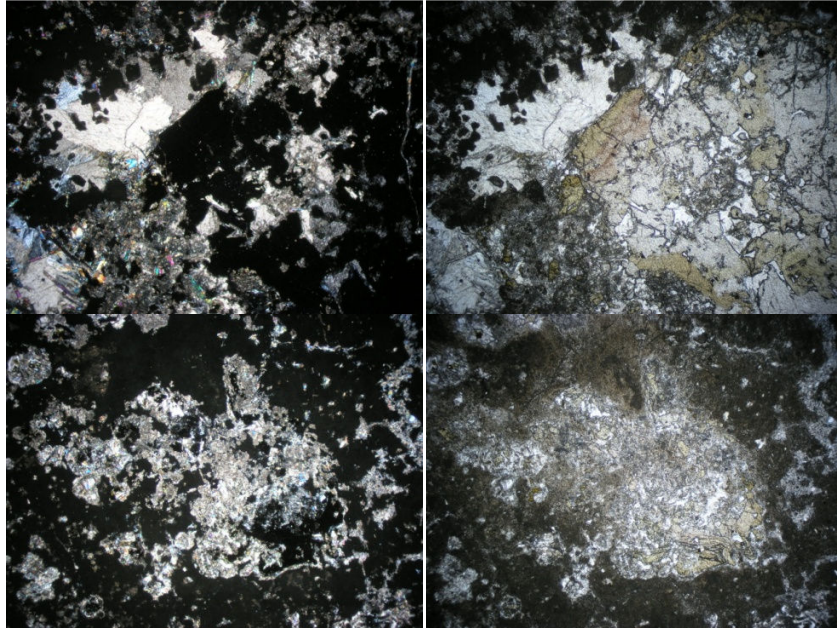
LC-05



LC-08

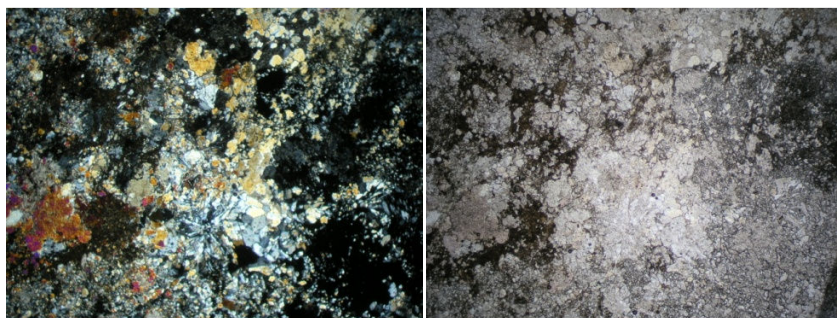


LC-8.1

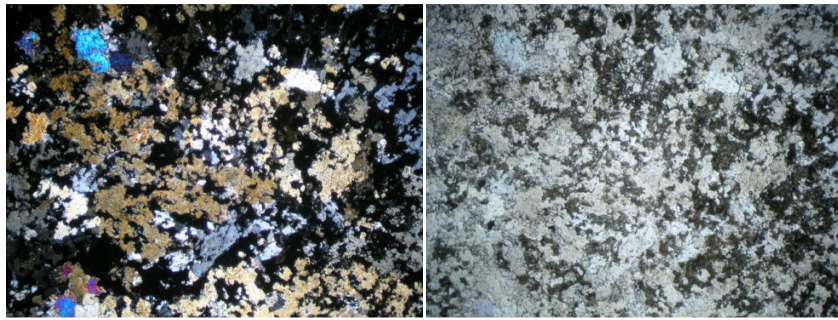


LC-360

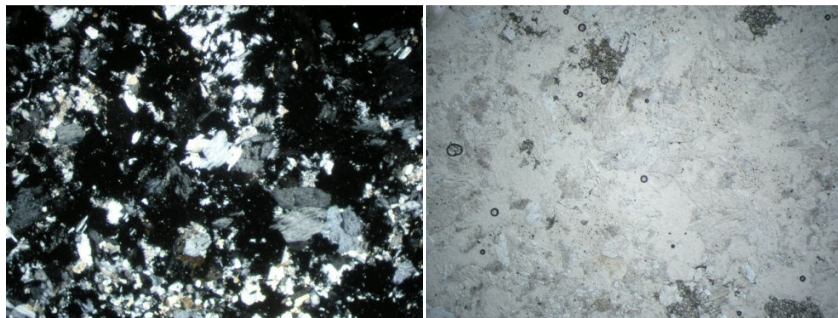
**Zona de Skarn de Wollastonita**



LC-459-A



**LC-B**



**LC-460-C**